

# Aquafit Pipes & Fittings.

2021 Core Product Catalogue



FREEPHONE **0508 AQUAFIT** (0508 278 234)

[sales@aquafit.co.nz](mailto:sales@aquafit.co.nz)

[aquafit.co.nz](http://aquafit.co.nz)

**AQUA-FIT**  
FOR PIPES AND FITTINGS

# We are Aquafit.

---

We manufacture and supply quality uPVC pipe and fittings. But we're much more than that.

We started from the ground up. Three brothers - all qualified tradesmen - with a dream to remove the distance between manufacturers and the trade.

From our years on the tools, we've experienced first-hand the frustration and expense of dealing with product quality issue, plumbing supply and delivery delays.

That's why we started Aquafit and why we place tradies at the heart of what we do.

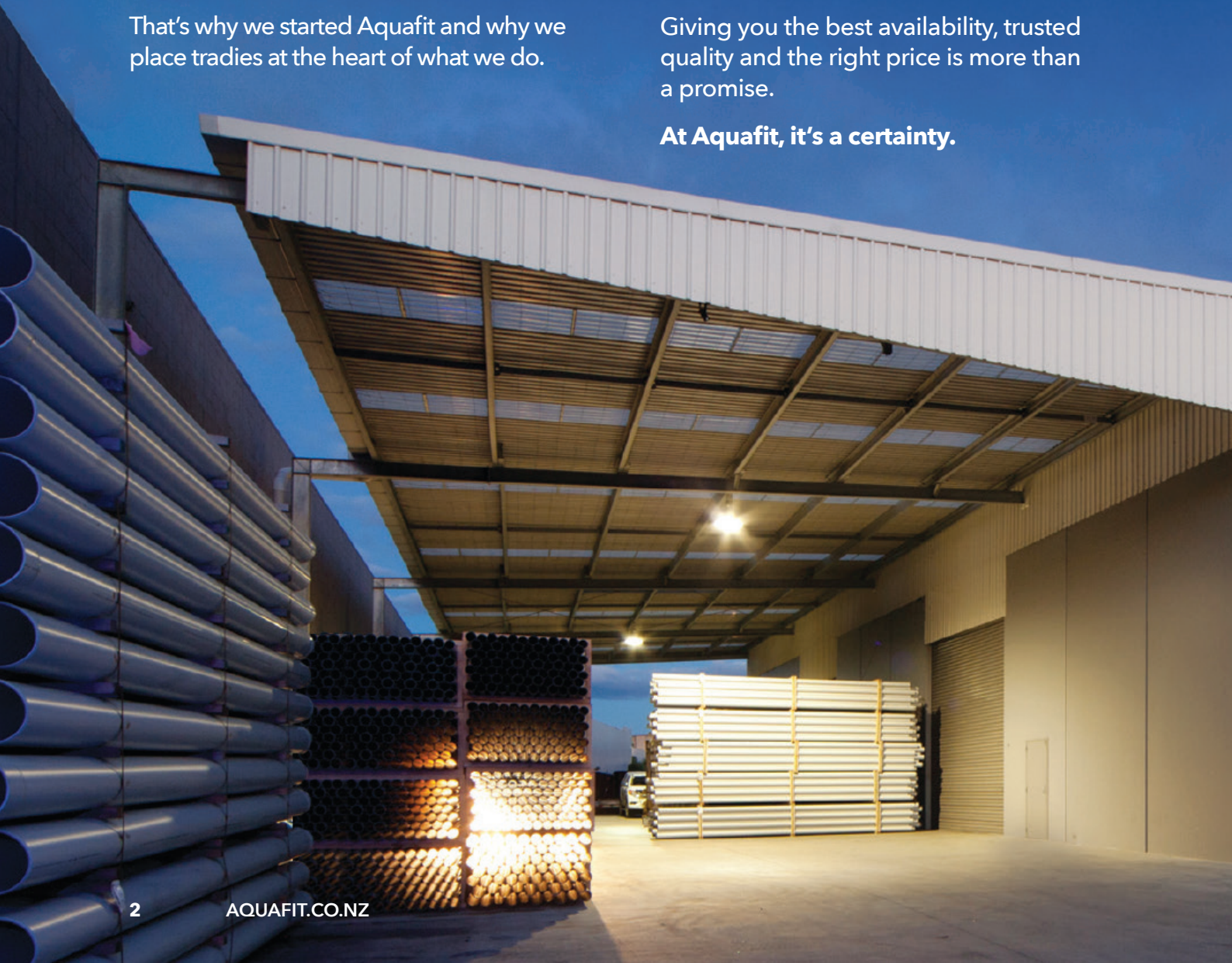
Making it beyond easy for you to get the quality PVC pipe and fittings you need when you need them.

As New Zealand's only independent manufacturer of PVC pipe solutions, we make it, source it, stock it, and deliver it. That way nothing is left to chance.

That means you'll get the pipes and fittings you need, when you need them for your plumbing, drainage or construction projects.

Giving you the best availability, trusted quality and the right price is more than a promise.

**At Aquafit, it's a certainty.**



# About this Catalogue.

This Core Product Catalogue is only showcasing our core products. We do hold other products in stock for your convenience and are happy to help source other product from our fellow manufacturers.

Phone our customer service team on 0508 278 234, We would love to help.





## Our ECOPLAS Product

ECOPLAS is a trusted brand of uPVC pipes and fittings designed, manufactured and sourced by tradesmen for tradesmen.

We manufacture in New Zealand and Australia and source from our excellent global partners to provide the highest quality product at a competitive price.

## Traceable Quality

You can have certainty in ECOPLAS products with all products traceable from raw material to finished product, including production audits, random batch testing, WaterMark Licencing, Best Environmental Practice certification and last but not least our own famous 'tough tradesman' test.



## The Preferred Choice for Tradespeople

Tradespeople across New Zealand and Australia choose ECOPLAS for:

- 1 Consistent Quality
- 2 Solid Wall Construction
- 3 BEP Certification
- 4 Watermark Licencing
- 5 Value for Money





# Contents.

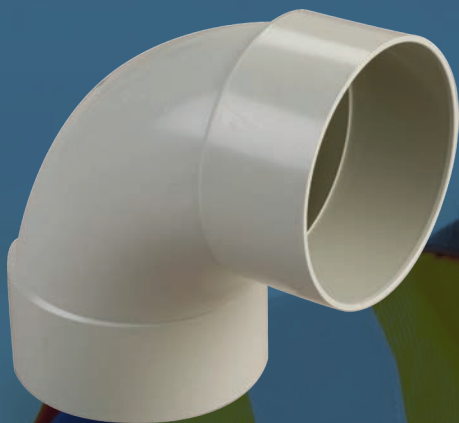
---

Drain, Waste and Vent Systems .....	p 08
Stormwater Systems .....	p 24
Stormwater 90mm .....	p 26
Stormwater 150mm.....	p 28
Stormwater 175mm.....	p 30
Stormwater 225mm.....	p 32
Downpipe Systems .....	p 34
Pipe Clip Systems.....	p 36
Quick Couplers .....	p 40
Heavy Duty Sewer Systems .....	p 42
Floor Drain Systems .....	p 44
Accessories.....	p 46



# DWV Systems.

Drain, Waste and Vent systems are the building blocks of plumbing. And when it comes to getting the basics right, we've got you covered.



**AQUA-FIT**

FOR PIPES AND FITTINGS



We carry a full range of uPVC pipes and fittings from 32 to 300mm diameter for residential, commercial and industrial projects. And, because we're DWV specialists, we always carry high stock units so you can get straight on with the job - no hold ups.

## DWV quick facts as per AS/NZS 1260.

- Pipes of nominal diameter up to and including 80mm have no pipe stiffness requirement - they're specified solely on materials and dimensions.
- Pipes 100mm+ are specified by minimum stiffness.
- Class SN4 & SN6 are suitable for plumbing and domestic use - unless otherwise specified, these will be supplied.
- Classes SN8, SN10 & SN16 are available on request.



Do you have any questions about Aquafit products or the related AS/NZS 1260 standards?

Give us a call on **0508 AQUAFIT**

## Sizing chart tip.

Sometimes there's confusion around actual pipe diameters compared to their 'so-called' size. So we've laid out all the specs side by side, so you can see exactly what you're getting...

### PLAIN WALL PIPE DIMENSIONS AS/NZS 1260

NORMAL SIZE (So-called Size)	MEAN OUTSIDE Ø		INTERNAL Ø
	Min	Max	Min
32	36.2	36.5	30.0
40	42.8	43.1	36.0
50	55.7	56.0	48.0
65	68.7	69.1	60.0
80	82.3	82.7	73.0
100	110.0	110.4	98.0
150	160.0	160.5	143.0
175	200.0	200.6	178.0
225	250.0	250.7	224.0
300	315.0	315.9	274.0
375	400.0	401.0	352.0

Ø: Diameter

## DWV PVC PIPE - 6m



DESCRIPTION	PRODUCT CODE		
32mm	100.32		
40mm	100.40		
50mm	100.50		
65mm	100.65		
80mm	100.80		
100mm SN6	100.100		
150mm SN4	100.150		
175mm SN4	100.175		
225mm SN4	100.225		
300mm SN4	100.300		

## DWV PVC PIPE - RING JOINT - 6m



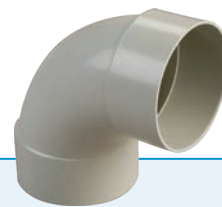
DESCRIPTION	PRODUCT CODE		
100mm SN16	100.100.SN16.RJ		
150mm SN16	100.150.SN16.RJ		

# ECOPLAS PIPE YOU CAN TRUST

- ① Made in New Zealand
- ② Consistent Quality
- ③ Solid Wall Construction
- ④ BEP Certification
- ⑤ Watermark Licencing
- ⑥ Value for Money

Ph 0508 278 234 to try today

## DWV BEND



DESCRIPTION		PRODUCT CODE		
32mm	45°	101.32.45		
	88°	101.32.88		
40mm	45°	101.40.45		
	88°	101.40.88		
50mm	45°	101.50.45		
	88°	101.50.88		
65mm	15°	101.65.15		
	45°	101.65.45		
	88°	101.65.88		
80mm	45°	101.80.45		
	88°	101.80.88		
100mm	5°	101.100.5		
	11°	101.100.11		
	15°	101.100.15		
	22°	101.100.22		
	30°	101.100.30		
	45°	101.100.45		
	60°	101.100.60		
	88°	101.100.88		
150mm	5°	101.150.5		
	30°	101.150.30		
	45°	101.150.45		
	88°	101.150.88		

**\*POPULAR PRODUCT**

## DWV BEND M&F



DESCRIPTION	PRODUCT CODE		
40mm	45°	171.40.45	
	88°	171.40.88	
50mm	45°	171.50.45	
	88°	171.50.88	
65mm	45°	171.65.45	
	88°	171.65.88	
100mm	5°	171.100.5	
	11°	171.100.11	
	15°	171.100.15	
	22°	171.100.22	
	30°	171.100.30	
100mm	45°	171.100.45	
	60°	171.100.60	
	88° (Tight Radius)	171.100.88N	

**\*POPULAR PRODUCT**

## DWV BEND M&F (IN PIPE)

**FITS INSIDE PIPE**



DESCRIPTION	PRODUCT CODE		
40mm x 88°	171.40.88P		
50mm x 88°	171.50.88P		
65mm x 88°	171.65.88P		

## DWV 50mm BEND M&F

**GREAT PRODUCT**



DESCRIPTION	PRODUCT CODE		
50mm x 40mm x 45°	171.50.40.45		

## DWV SIDE ACCESS BEND



DESCRIPTION		PRODUCT CODE
100mm	45°	103.100.45
	88°	103.100.88

## DWV INSPECTION BEND



DESCRIPTION		PRODUCT CODE
40mm	88°	101.40.88W
50mm	45°	101.50.45W
	88°	101.50.88W
65mm	88°	101.65.88W

## DWV RAMP ACCESS BEND



DESCRIPTION	PRODUCT CODE
102.100.88	102.100.88

**We are about championing the trade. Placing you at the heart of what we do.**

**Making it beyond easy for you to get the quality pipes and fittings you need.**

## DWV JUNCTION



DESCRIPTION	PRODUCT CODE		
32mm	45°	104.32.45	
	88°	104.32.88	
40mm	45°	104.40.45	
	88°	104.40.88	
50mm	45°	104.50.45	
	88°	104.50.88	
65mm	45°	104.65.45	
	88°	104.65.88	
80mm	45°	104.80.45	
	88°	104.80.88	
100mm	45°	104.100.45	
	88°	104.100.88	
150mm	45°	104.150.45	
	88°	104.150.88	

## DWV TEE JUNCTION



DESCRIPTION	PRODUCT CODE		
100mm	133.100		

## DWV REAR ACCESS JUNCTION



DESCRIPTION	PRODUCT CODE		
100mm 88°	105.100.88		

## DWV REDUCING JUNCTION



DESCRIPTION	PRODUCT CODE		
100mm x 50mm x 45°	104.100.50.45		
100mm x 65mm x 45°	104.100.65.45		
80mm x 50mm x 45°	104.80.50.45		
150mm x 100mm x 45°	104.150.100.45		

## DWV 4-WAY RISER JUNCTION



DESCRIPTION	PRODUCT CODE		
80mm	174.80		
100mm	174.100		

## DWV INSPECTION JUNCTION



DESCRIPTION	PRODUCT CODE		
100mm x 45° LH	107.100.45 LH		
100mm x 45° RH	107.100.45 RH		

## DWV INSPECTION PIPE



DESCRIPTION	PRODUCT CODE		
100mm	129.100		
100mm F&F	129.100F		

## DWV THREADED SOCKET



DESCRIPTION	PRODUCT CODE		
100mm	110.100T		
150mm	110.150T		

## DWV SOCKET



DESCRIPTION	PRODUCT CODE		
32mm	110.32		
40mm	110.40		
50mm	110.50		
65mm	110.65		
80mm	110.80		
100mm	110.100		

# GLUE SLIP COUPLER

## HOW TO USE:

1. Slide coupler onto pipe without glue.
2. Liberally glue the pipes only
3. Twist and slide backover the glued pipes

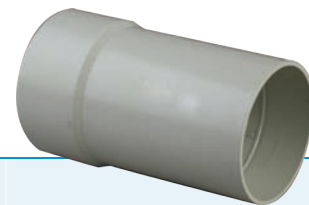


**OTHER SIZES AVAILABLE**

DESCRIPTION	PRODUCT CODE		
100mm	151G.100		



## DWV SLAB REPAIR



DESCRIPTION	PRODUCT CODE
40mm	178.40
50mm	178.50
100mm	178.100P

## DWV FLOOR WASTE GULLY



DESCRIPTION	PRODUCT CODE
80mm x 50mm	159.80.50
80mm x 65mm	159.80.65
100mm x 50mm	159.100.50
100mm x 65mm	159.100.65

## DWV GULLY TRAP



DESCRIPTION	PRODUCT CODE
100mm	159.100

## DWV GULLY DISH & LID



DESCRIPTION	PRODUCT CODE
100mm Gully Dish & Lid	1575.100
100mm Gully Lid Only	1575.100L

## DWV LEAK CONTROL FLANGE



DESCRIPTION	PRODUCT CODE
80mm	126.80
80mm (for vinyl)	126.80V
100mm	126.100
100mm (for vinyl)	126.100V

## GULLY DISH EXTENSION



DESCRIPTION	PRODUCT CODE
100mm	176.100.100
200mm	176.100.200
300mm	176.100.300

## DWV FINISHING COLLAR & GRATE



DESCRIPTION	PRODUCT CODE
100mm Collar Only	168.100C
100mm Grate Only	168.100G

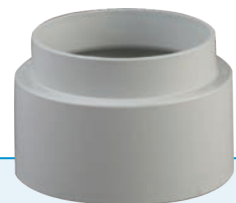
## DWV TRAP SCREW

**BRASS OPTION AVAILABLE  
PH 0508 278 234**



DESCRIPTION	PRODUCT CODE
100mm	120.100
150mm	120.150

## DWV WEATHER APRON



DESCRIPTION	PRODUCT CODE
50mm	131.50

## DWV SCREW CAP



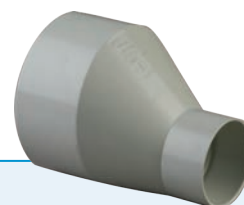
DESCRIPTION	PRODUCT CODE
100mm	136.100C
150mm	136.150C

## DWV PUSH ON CAP



DESCRIPTION	PRODUCT CODE		
32mm	137.32		
40mm	137.40		
50mm	137.50		
65mm	137.65		
80mm	137.80		
100mm	137.100		
150mm	137.150		

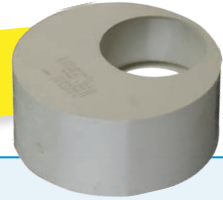
## DWV LEVEL INVERT



DESCRIPTION	PRODUCT CODE		
50mm x 40mm	123.50.40		
65mm x 40mm	123.65.40		
65mm x 50mm	123.65.50		
80mm x 40mm	123.80.40		
80mm x 50mm	123.80.50		
100mm x 50mm	123.100.50		
100mm x 65mm	123.100.65		
100mm x 80mm	123.100.80		
150mm x 100mm	123.150.100		

## DWV REDUCING BUSH

**FITS INSIDE SOCKET**



DESCRIPTION	PRODUCT CODE
40mm x 32mm	124.40.32
50mm x 40mm	124.50.40
65mm x 40mm	124.65.40
65mm x 50mm	124.65.50
80mm x 50mm	124.80.50
100mm x 40mm	124.100.40
100mm x 50mm	124.100.50
100mm x 65mm	124.100.65
100mm x 80mm	124.100.80

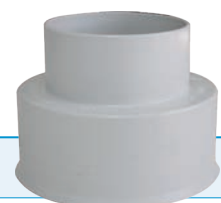
## DWV PIPE REDUCER

**FITS INSIDE PIPE**



DESCRIPTION	PRODUCT CODE
50mm x 40mm	198.50.40
65mm x 40mm	198.65.40
65mm x 50mm	198.65.50
100mm x 40mm	198.100.40
100mm x 50mm	198.100.50
100mm x 65mm	198.100.65

## DWV EARTHENWARE SOCKET ADAPTOR



DESCRIPTION	PRODUCT CODE
100mm	125.100

## DWV FEMALE TRAP CONNECTOR

DESCRIPTION	PRODUCT CODE		
40mm	112.40		
50mm	112.50		



## DWV MALE TRAP CONNECTOR

DESCRIPTION	PRODUCT CODE		
40mm	113.40		
50mm	113.50		



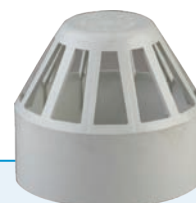
## DWV PAN COLLAR

DESCRIPTION	PRODUCT CODE		
100mm	127.100		
100mm (Offset Pan Collar)	127.1000		



## DWV VENT COWL

DESCRIPTION	PRODUCT CODE		
50mm	150.50		
80mm	150.80		
100mm	150.100		
150mm	150.150		



## DWV FLAP VALVE

DESCRIPTION	PRODUCT CODE		
50mm	183.50		

**KEEP VERMIN OUT**





**We dig deep and draw on our knowledge of the trade to give you the right solutions for your business.**

**Getting you what you need, when and where you need it, doesn't happen by chance.**

**At Aquafit, it's a certainty!**

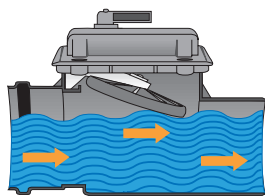
# Non-Return Valves.



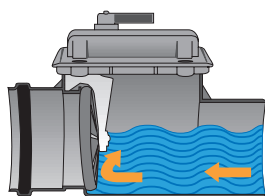
Our Non-Return Valve is a simple and effective way to eliminate flood risk from backflow through drainage channels.

## Features:

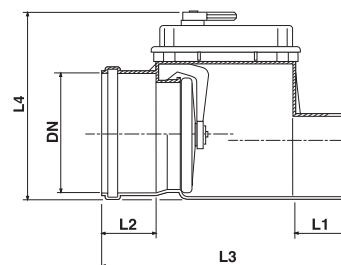
- Rigid uPVC injection molded body
- M&F fitting (rubber ring socket inlet, spigot outlet)
- Handel to allow valve to locked in open or close position
- Opening top inspection cover
- Removable parts for servicing



**NORMAL WORKING SITUATION**



**EFFECTIVE ANTI-FLOODING**



### INSPECTION CHAMBER

Internal profile specially designed to provide uninterrupted flow (no reduced crossed flow section). Full access for pipe cleaning or rodding.

### PLASTIC FLAP

Rigid uPVC injection moulded. Completely removable for servicing.

### FLAP GASKET

Twin-lip profile to ensure optimal water tightness.

### INTERNAL SHAPE

Built-in waterfall. No reduced crossed flow section.

## NON-RETURN VALVES (100mm, 150mm)

DN	L1	L2	L3	L4	PRODUCT CODE		
110	70	60	307	230	NR.100		
160	80	74	342	255	NR.150		

# Stormwater Systems.

From commercial grade downpipes to streamlined home drainage systems, we've designed a tough and practical range for collecting and directing excess water where you need it to go.



**AQUA FIT**

FOR PIPES AND FITTINGS



Check out our large bore stormwater systems - a popular choice for commercial downpipe applications, moulded fittings, sweeping tight radiuses, smart colours that match our pipe range and look so good you won't be painting them.

Plus, smart, strong alloy clipping systems to finish it all off (see Holderbat Clips on page 37).

All our stormwater systems are available from 90-300mm diameter and we always carry high stock units so you can get exactly what you need any time.



Do you have any questions about Aquafit products or the related AS/NZS 1254 standards?

Give us a call on 0508 AQUAFIT

## Quick tip.

For 100mm stormwater fittings, just use 100mm DWV fittings (from page 11).

It'll give you a wider range, better quality and better value. Though if you must have stormwater fittings, just talk to us 0508 AQUAFIT.

We carry a full range of uPVC pipes and fittings from 32 to 300mm diameter for residential, commercial and industrial projects. And, because we're DWV specialists, we always carry high stock units so you can get straight on with the job - no hold ups.

## Sizing chart tip.

This sizing chart from AS/NZS 1254 lays out all the pipe sizes side by side so there's no confusion.

### PLAIN WALL PIPE DIMENSIONS AS/NZS 1254

NORMAL SIZE (So-called Size)	MEAN OUTSIDE Ø		INTERNAL Ø
	Min	Max	Min
90	90.0	90.3	80.0
100	110.0	110.4	98.0
150	160.0	160.5	98.0
175	200.0	200.6	143.0
225	250.0	250.7	178.0
300	315.0	315.9	253.0

Ø: Diameter

# 90mm Stormwater.



## SW PVC PIPE

DESCRIPTION	PRODUCT CODE
90mm SN4 PVC Pipe - 6m	700.90

## SW BEND



DESCRIPTION	PRODUCT CODE
90mm x 15° SW Bend	701.90.15
90mm x 22° SW Bend	701.90.22
90mm x 45° SW Bend	701.90.45
90mm x 88° SW Bend	701.90.88

## SW BEND M+F

**POPULAR PRODUCT**



DESCRIPTION	PRODUCT CODE
90mm x 45° SW Bend M+F	771.90.45
90mm x 88° SW Bend M+F	771.90.88

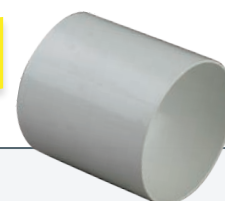
## SW JUNCTION



DESCRIPTION	PRODUCT CODE
90mm x 45° SW Junction	704.90.45
90mm x 88° SW Junction	704.90.88

## SW GLUED SLIP COUPLER

**POPULAR PRODUCT**



DESCRIPTION	PRODUCT CODE
90mm SW Glued Slip Coupler	751G.90

## SW SOCKET



DESCRIPTION	PRODUCT CODE
90mm SW Socket	710.90

## SW SCREW CAP

DESCRIPTION	PRODUCT CODE
90mm Screw Cap	736C.90



## SW PUSH ON CAP

DESCRIPTION	PRODUCT CODE
90mm	737.90
90mm (Heavy Duty)	737.90HD
90mm Push on Cap/Plug	737.90MF



## SW INVERTED REDUCER F+F

DESCRIPTION	PRODUCT CODE
100mm x 90mm	725.100.90



## SW REDUCING BUSH

DESCRIPTION	PRODUCT CODE
100mm x 90mm	724.100.90
100mm x 90mm (In pipe)	798.100.90



## SW GRATE

DESCRIPTION	PRODUCT CODE
90mm SW GRATE	728.90



## SW ADAPTOR

DESCRIPTION	PRODUCT CODE
90mm x 80mm	724.90.80



# 150mm Stormwater.

## SW BEND

DESCRIPTION	PRODUCT CODE		
150mm x 45° SW Bend	701.150.45		
150mm x 88° SW Bend	701.150.88		
150mm x 150° SW Bend	701.150.15		



**OTHER ANGLES AVAILABLE IN 150mm  
IN DWV, SEE PAGE 11**

## SW BEND M+F

DESCRIPTION	PRODUCT CODE		
150mm x 45° SW Bend M+F	771.150.45		
150mm x 88° SW Bend M+F	771.150.88		

**POPULAR PRODUCT**



## SW JUNCTION

DESCRIPTION	PRODUCT CODE		
150mm x 45° SW Junction	704.150.45		
150mm x 88° SW Junction	704.150.88		



## SW REDUCING JUNCTION

DESCRIPTION	PRODUCT CODE		
150mm x 100mm x 45°	704.150.100.45		
150mm x 100mm x 88°	704.150.100.88		





## SW REDUCING BUSH

DESCRIPTION	PRODUCT CODE		
150mm x 100mm	724.150.100		



## SW SOCKET

DESCRIPTION	PRODUCT CODE		
150mm SW SOCKET	710.150		

**We standard supply  
Drain, Waste and  
Vent pipe rather than  
Stormwater pipe.**

**It looks better and it is  
better, see page 10.**

**Must have Stormwater  
pipe? Give us a call on  
0508 278 234.**

**AQUA FIT**  
FOR PIPES AND FITTINGS

# 175mm Stormwater.

## SW BEND



DESCRIPTION	PRODUCT CODE
175mm x 45° SW BEND	701.175.45
175mm x 88° SW BEND	701.175.88

## SW BEND M+F

**POPULAR PRODUCT**



DESCRIPTION	PRODUCT CODE
175mm x 45° SW BEND M+F	771.175.45
175mm x 88° SW BEND M+F	771.175.88

## SW JUNCTION



DESCRIPTION	PRODUCT CODE
175mm x 45° SW Junction	704.175.45
175mm x 88° SW Junction	704.175.88

## SW REDUCING JUNCTION



DESCRIPTION	PRODUCT CODE
175mm x 100mm x 88°	704.175.100.88
175mm x 150mm x 88°	704.175.150.88

## SW SOCKET



DESCRIPTION	PRODUCT CODE
175mm SW Socket	710.175

## SCREW CAP & BASE



DESCRIPTION	PRODUCT CODE
175mm	736.175

## SW REDUCING BUSH



DESCRIPTION	PRODUCT CODE
175mm x 100mm	724.175.100
175mm x 150mm	724.175.150

\*Other types of reducer available. Ph 0508 278 234 for more info.

We hold in **STOCK** a large range of **UPVC FITTINGS** or we will **FABRICATE** special fittings to order.

Contact us today  
on **0508 278 234**.

**AQUA FIT**  
FOR PIPES AND FITTINGS

# 225mm Stormwater.

OTHER SLIGHT BENDS AVAILABLE  
PH 0508 278 234



## SW BEND

DESCRIPTION	PRODUCT CODE
225mm x 45°	701.225.45
225mm x 88°	701.225.88

## SW JUNCTION

DESCRIPTION	PRODUCT CODE
225mm x 88°	704.225.88



## SW REDUCING JUNCTION

DESCRIPTION	PRODUCT CODE
225mm x 175mm x 88°	704.225.175.88



## SW SOCKET

DESCRIPTION	PRODUCT CODE
225mm	710.225



## SW REDUCING BUSH

DESCRIPTION	PRODUCT CODE
225mm x 175mm	724.225.175







**We also FABRICATE fittings to order, turning concept into a reality.**

**Phone us today and we will make the impossible possible.**

**0508 278 234**



**AQUA FIT**  
FOR PIPES AND FITTINGS

- DRAIN, WASTE & VENTS
- STORMWATER
- STORMWATER 90mm
- STORMWATER 150mm
- STORMWATER 175mm
- STORMWATER 225mm**
- DOWNPIPE
- PIPE CLIPS
- QUICK COUPLERS
- HEAVY DUTY SEWER
- FLOOR DRAIN
- ACCESSORIES

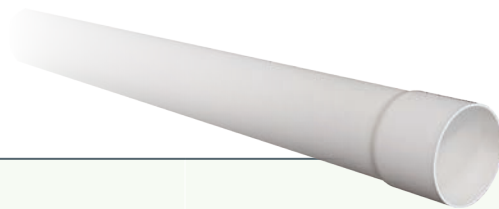
# Downpipe.

At Aquafit we only supply rainwater systems that are lead-free and suitable for collecting rainwater for drinking. Our clean, smart systems are UV stabilised to ensure their good looks will last.



**AQUA FIT**  
FOR PIPES AND FITTINGS

## DOWNPIPE x 3m



DESCRIPTION	PRODUCT CODE
80mm	RP80

## DOWNPIPE BEND x 95°



DESCRIPTION	PRODUCT CODE
80mm	RB2.80

## DOWNPIPE CLIP



DESCRIPTION	PRODUCT CODE
80mm	RC80

## DOWNPIPE ADAPTOR



DESCRIPTION	PRODUCT CODE
100mm x 80mm	725.100.80

REDUCES PIPE FROM  
100mm TO 80mm DOWNPIPE  
**COOL PRODUCT!**



Do you have any questions about our rainwater system or commercial downpipe products?

Give us a call on 0508 AQUAFIT

# Pipe Clip Systems.

As specialists in pipe and fittings it only makes sense that we provide a clipping system too we provide a whole range of clipping systems to do the job or meet the look you're going for.



**AQUA-FIT**  
FOR PIPES AND FITTINGS

The alloy Holderbat system is a favourite – incredibly simple to use with independent, fully adjustable legs, great value and built to last. Ask us for a sample today. We carry stock for clipping systems from 32-300mm and we can also custom build to fit your job exactly, just let us know your requirements.

## ALUMINIUM HOLDER BAT CLIPS


GREAT PRODUCT!  
**FULLY ADJUSTABLE**



DESCRIPTION	PRODUCT CODE		
65mm Holderbat Clip	140.65HB		
80mm Holderbat Clip	140.80HB		
100mm Holderbat Clip	140.100HB		
150mm Holderbat Clip	140.150HB		
200mm Holderbat Clip	140.200HB		
250mm Holderbat Clip	140.250HB		
300mm Holderbat Clip	140.300HB		


## ALUMINIUM HOLDER BAT BRACKET EXTENSION LEG

DESCRIPTION	PRODUCT CODE		
140.HBEL	Long (160mm)		
140.HBEM	Medium (120mm)		



## MUNZING RINGS

DESCRIPTION	PRODUCT CODE		
50mm	140.50MR		
80mm	140.80MR		
100mm	140.100MR		
150mm	140.150MR		
175mm	140.175MR		
250mm	140.225MR		
300mm	140.300MR		



## HEAVY DUTY MUNZING RINGS



DESCRIPTION	PRODUCT CODE		
150mm	140.150MRH		
250mm	140.225MRH		
300mm	140.300MRH		

## MUNZING RING BASE PLATE



DESCRIPTION	PRODUCT CODE		
10mm	140BP.10		
12mm, Welded	140BP.12		

## THREADED ROD FOR MUNZING RINGS



DESCRIPTION	PRODUCT CODE		
10mm x 1m	140.TR.10.1		
10mm x 2m	140.TR.10.2		
10mm x 3m	140.TR.10.3		
12mm x 3m	140.TR.10.3		
12mm x 3m	140.TR.10.3		
12mm x 3m	140.TR.10.3		

**Use 10mm Base Plate & Threaded Rod for Clips to 150mm**

## MUNZING RINGS RUBBER INSULATED STAINLESS STEEL



DESCRIPTION	PRODUCT CODE		
32mm	140.32MRI		
40mm	140.40MRI		
50mm	140.50MRI		
65mm	140.65MRI		
80mm	140.80MRI		
100mm	140.100MRI		
150mm	140.150MRI		
175mm	140.175MRI		

## BACKING PLATE FOR MUNZING RINGS STAINLESS STEEL



DESCRIPTION	PRODUCT CODE		
100mm	140BPSS		

## THREADED ROD FOR MUNZING RINGS STAINLESS STEEL



DESCRIPTION	PRODUCT CODE		
10mm x 1m	140TRSS		

**Use 12mm Base Plate & Threaded  
Rod for Clips above 150mm**

# Quick Couplers.


Gone are the days of rubber sleeves and wire ties... Quick Couplers make tough jobs like pipe repairs or joining earthenware to PVC pipes an ultra simple task. Quick couplers are a quick and very effective fix saving you time, materials and money. We stock Quick Couplers for pipes from 32-375mm in diameter.

## Quick coupler ID sizing chart.

		B (INSIDE DIAMETER IN mm)												
		42	49	62	70	86	92	112	144	160	200	260	315	
A (INSIDE DIAMETER IN mm)	42	32.PQ												
	49		40.PQ											
	62			50.PQ										
	70				65.PQ									
	86					80.PQ								
	92						90.PQ							
	112							100.80.PQ	100.PQ					
	144								100.EPQ	100.EQ				
	160								150.100.PQ		150.PQ			
	200										150.EPQ	200.PQ		
	260										200.150.PQ	150.EQ	200.200.PQ	250.PQ
	315												300.250.PQ	300.PQ

**COLOUR KEY**

- **PVC coupler** - For connecting PVC to PVC (or any combination of Cast Iron, Copper, Galvanised Steel and Lead)
- **Earthenware coupler** - For connecting Earthenware to Earthenware
- **Earthenware to PVC coupler** - For connecting Earthenware to PVC
- **Reducing coupler** - For connecting PVC to PVC (or any combination of Cast Iron, Copper, Galvanised Steel and Lead)



Quick couplers have 5% plus or minus tolerance on the given inside diameters.



## PVC QUICK COUPLER



DESCRIPTION	PRODUCT CODE		
32mm	32.PQ		
40mm	40.PQ		
50mm	50.PQ		
65mm	65.PQ		
80mm	80.PQ		
90mm	Use 80.PQ - Fits 90mm pipe		
100mm	100.PQ		
150mm	150.PQ		
200mm	200.PQ		
250mm	250.PQ		
300mm	300.PQ		

## EARTHENWARE TO PVC QUICKCOUPLER



DESCRIPTION	PRODUCT CODE		
100mm	100.EPQ		

## PVC REDUCING COUPLER



DESCRIPTION	PRODUCT CODE		
100mm x 80mm	100.80.PQ		
150mm x 100mm	150.100PQ		

# Heavy Duty Sewer System.

Other products available! We custom-make and fabricate to your needs. Ph 0508 AQUAFIT (0508 278 234) to discuss your options.



**AQUA-FIT**  
FOR PIPES AND FITTINGS

## SN16 LUNDON JUNCTION STD M&F



DESCRIPTION	PRODUCT CODE
150mm x 100mm	Z1574.150.100.88

## SN16 LUNDON JUNCTION DOUBLE SOCKET



DESCRIPTION	PRODUCT CODE
150mm x 100mm	Z1504.150.100.88

## SN16 LUNDON JUNCTION SPIGOT



DESCRIPTION	PRODUCT CODE
150mm x 100mm	Z1584.150.100.88

## SN16 MANHOLE STARTER



DESCRIPTION	PRODUCT CODE
100mm	Z1500.100
150mm	Z1500.150

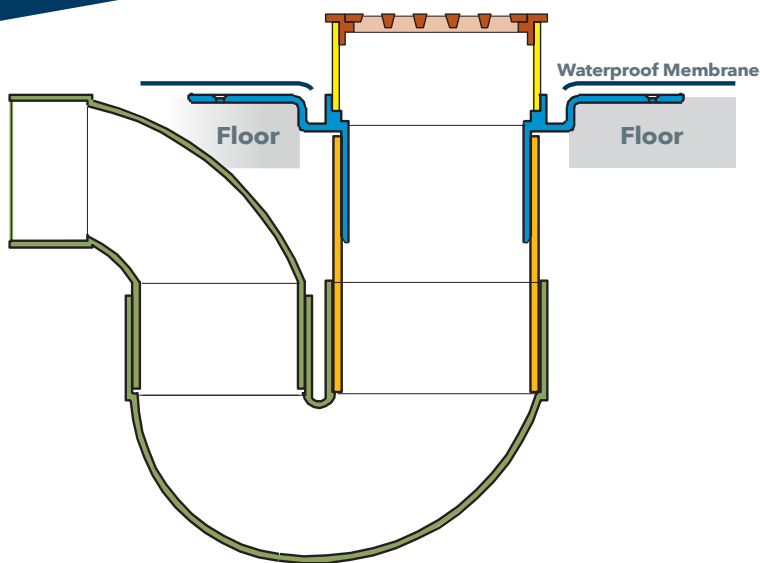
## SN16 GRITTED MANHOLE STARTER



DESCRIPTION	PRODUCT CODE
100mm	Z1500.100G
150mm	Z1500.150G
175mm	Z1500.175G
225mm	Z1500.225G
300mm	Z1500.300G

# Floor Drain Systems.

We reckon simple is always better, and we have made things super simple for you with our complete floor drain sets - everything you need to get the job done.



## COLOUR KEY

- Trap
- Riser Pipe
- Leak Control Flange
- Grate Adaptor
- Grate
- Waterproof Membrane

## » Floor Kit Instructions

1. Fix LEAK CONTROL FLANGE in place on floor using screws/sealant
2. Attach RISER PIPE and TRAP underneath LEAK CONTROL FLANGE and continue pipeout
3. Waterproof Membrane the area finishing Waterproofing Membrane on the LEAK CONTROL FLANGE
4. Use GRATE ADAPTOR to adjust to the correct height for tiles
5. Sit GRATE on GRATE ADAPTOR and fill gap between tiles and GRATE with either sealant or grout

**AQUA-FIT**  
FOR PIPES AND FITTINGS



## TILE FLOOR SET, SQUARE

DESCRIPTION	PRODUCT CODE		
100mm x 150mm	169.100.50TKS		
100mm x 65mm	169.100.65TKS		
80mm x 50mm	169.80.50TKS		
80mm x 50mm	169.80.65TKS		

Also available with a round grate - Ph 0508 AQUAFIT (0508 278 234)



## VINYL FLOOR SET

DESCRIPTION	PRODUCT CODE		
100mm x 50mm	169.100.50VK		
100mm x 65mm	169.100.65VK		

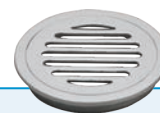
## SQUARE CHROMED BRASS FLOOR GRATE

DESCRIPTION	PRODUCT CODE		
100mm	169.100. CPS		
80mm	169.80. CPS		



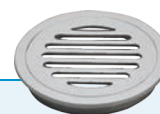
## ROUND CHROMED BRASS FLOOR GRATE

DESCRIPTION	PRODUCT CODE		
100mm	169.100.CPR		
80mm	169.80.CPR		



## CHROMED BRASS VINYL FLOOR GRATE

DESCRIPTION	PRODUCT CODE		
80mm or 100mm	169.CPV		



# Accessories.

We're pipe and fitting specialists here at Aquafit, but there are a few other essentials you need to get the job done and dusted. We've stocked all the core items you may need.



**AQUA-FIT**  
FOR PIPES AND FITTINGS



## GLUE 4 LITRE

DESCRIPTION	PRODUCT CODE		
4L	SC4000-CH		



## GLUE 500ML

DESCRIPTION	PRODUCT CODE		
500ml	SC500-CH		



## CLEANER/PRIMER (RED) 4 LITRE

DESCRIPTION	PRODUCT CODE		
4L	CP4000-CH		



## CLEANER/PRIMER (RED) 500ml

DESCRIPTION	PRODUCT CODE		
500ml	CP500-CH		

**Other accessories available.  
Spray paint, tape measures,  
hand saws, lube, etc.  
Phone us on 0508 278 234.**



**AQUA FIT**  
FOR PIPES AND FITTINGS